



FRIGADON CHILLERS

GC is able to bring industrial equipment into a traditional commercial equipment market. Energy savings and reliability are built into our designs, reducing necessary installed equipment, all with significantly better ability to control every aspect of your grow cycle.

Frigadon chillers have a proven track record in many industries around the world, and the cannabis industry is the next emerging market to benefit from the multi-circuited, dual-liquid-loop design. Cooling products with chilled liquid and fluid coolers inside rooms is commonplace. Grow Controlled's innovation in adding a warm loop of HTC fluid efficiently provides improved RH control using reheat coils. The simplicity and integration of the chiller within the GC control system allows for highly accurate temperature and RH conditions, giving the grower the flexibility to meet their custom grow requirements with the touch of a button. A single chiller can operate many rooms, even with different room usages, and in most cases, an entire facility.



To substantially reduce operating costs, GC has developed a method of humidity control in rooms without the use of costly dehumidifiers. Heat reclaim utilizes otherwise wasted heat from the condensers and transfers it to custom designed fluid coolers inside the grow rooms. These custom low profile, vertical flow, dual-discharge heat exchangers incorporate both cold and warm fluid loops. By running the cold and warm coilpacks in harmony, we are able to manipulate dew points and pull moisture out of the air with ease. The end result is constant temperature and RH levels without conventional dehumidifiers, all at a fraction of the operating expense.

Never before has it been so easy to install and commission a refrigeration system. Chillers come with complete controls and electric, Bitzer compressors, as well as built-in circulator pumps on inverter drives. Just connect the power supply and the flow/return pipes on the liquid side and you are ready to go!

BENEFITS

- ▣ Environmentally-Friendly Design
- ▣ Minimal Footprint - Indoor or Outdoor
- ▣ Expedient Installation & Low Maintenance
- ▣ Reduces Operating Expenses Substantially
- ▣ GC Method Eliminates Dehumidifiers
- ▣ Control Vapor Pressure Deficit
- ▣ Frees Valuable Grow Room Space for Lights, Plants, etc.
- ▣ Control within 1°F & 1% RH
- ▣ Web-Based Remote Monitor & Control



Free Cooler Option using Outdoor Temperatures for Cooling during Winter Months

© 2021 GROW CONTROLLED, LLC. ALL RIGHTS RESERVED. CONTACT US FOR MORE INFORMATION.

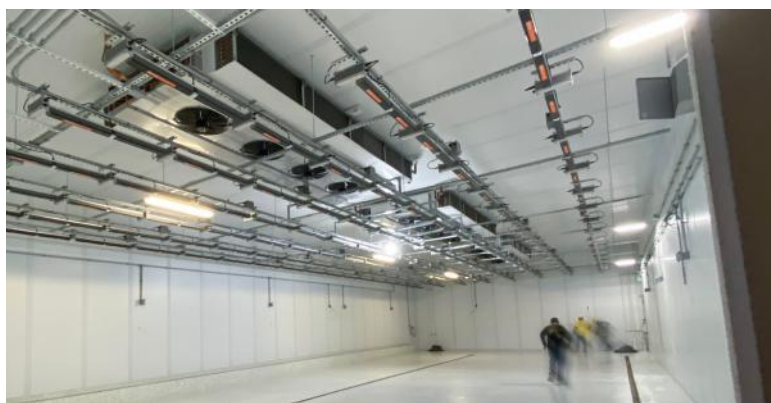
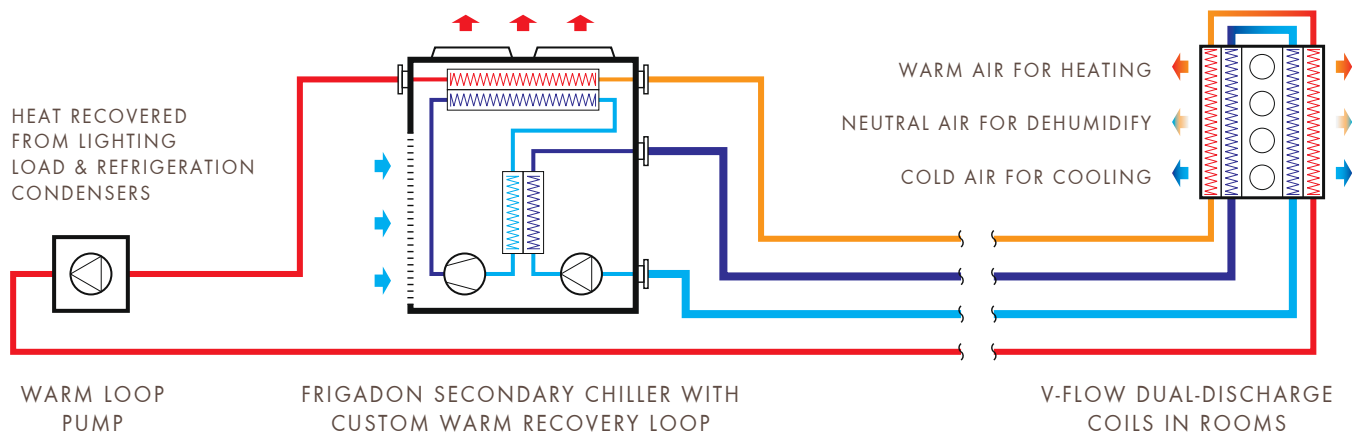


GROW CONTROLLED, LLC
100 APPLEWOOD DRIVE SPARTA MICHIGAN · SODUS NEW YORK · UNION GAP WASHINGTON · PADDOCK WOOD UK
T 616.256.0420 · F 616.887.1128 · INFO@GROWCONTROLLED.COM · GROWCONTROLLED.COM

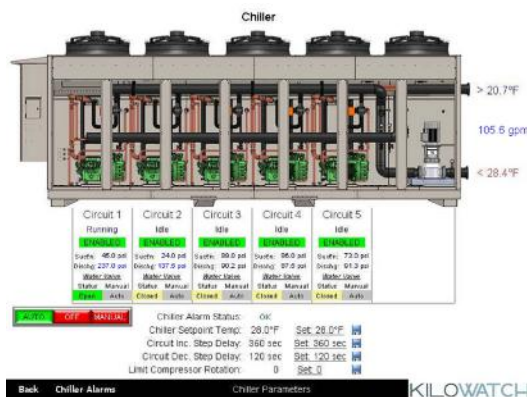


FRIGADON CHILLERS

G R O W R O O M R E F R I G E R A T I O N D E S I G N



Low Profile V-Flow Dual-Discharge Coils use Less Space and Improve Airflow



Remote Chiller Operation via GC KiloWatch™



© 2021 G R O W C O N T R O L L E D , L L C . A L L R I G H T S R E S E R V E D . C O N T A C T U S F O R M O R E I N F O R M A T I O N .



G R O W C O N T R O L L E D , L L C
 100 APPLEWOOD DRIVE SPARTA MICHIGAN · SODUS NEW YORK · UNION GAP WASHINGTON · PADDOCK WOOD UK
 T 616.256.0420 · F 616.887.1128 · INFO@GROWCONTROLLED.COM · GROWCONTROLLED.COM