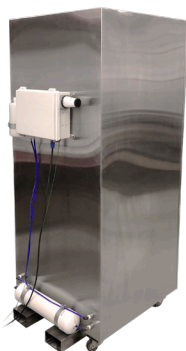


# C Ū R P O D   S P A C E   S A V R



*CūrPod SpaceSavr Interior showing RPC Stacks & Hinged Door Seal*



*CūrPod SpaceSavr Exterior Rear & Front*

## F E A T U R E S

- ▣ Automatic Curing
- ▣ Self-Contained Control of Low O<sub>2</sub> Atmosphere for Long Term Holding using N<sub>2</sub> Gas
- ▣ Automatic Operation & Full Data Recording
- ▣ Internal Sensors for O<sub>2</sub>, CO<sub>2</sub>, RH and Temperature
- ▣ Hydrate Dry Product
- ▣ Introduce Terpenes
- ▣ Standard Size for 18 RPCs (95 lbs)
- ▣ Cloud-Based Monitoring and Control
- ▣ Dashboard Showing Multiple CūrPods

The CūrPod SpaceSavr System is a hermetically sealed stainless steel enclosure with a gastight sealed door and a 95 pound capacity of product in 18 standard 15.5 x 23.5 x 7.75 inch plastic crates. The vertical design and hinged door focuses on compact design, maximizing dry/cure capability in existing spaces where space is at a premium.

- ▣ No Guessing
- ▣ No Labor
- ▣ No Burping
- ▣ Automatic Operation
- ▣ No Recordkeeping
- ▣ Full Data Recording

Each CūrPod is self-contained with built-in oxygen, carbon dioxide, temperature and relative humidity sensors with digital communications to a cloud site. Built-in control valves and blowers regulate the connected nitrogen, air, or humidity supply to accurately maintain the programmed levels.

- ▣ Customize & control O<sub>2</sub> & CO<sub>2</sub> levels
- ▣ Perfect your curing process for consistency
- ▣ Preserve product using nitrogen gas for up to 12 months
- ▣ Built-in scale for logging of weight

The individual measured data is regularly collected and can be displayed on a program that runs on the PC or can be exported to Excel or other common programs. The CūrPod SpaceSavr connects to an internet cloud-based dashboard, also accessible from any device. There, multiple CūrPods can be viewed at a glance from an overview screen, with individual data and setpoint adjustment available with a click. Historical data is available for export and download, as well, to aid in record-keeping.

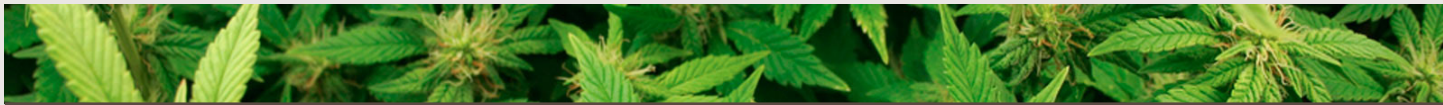
- ▣ Breakdown chlorophyll and sugars, not terpenes
- ▣ More time growing; less time curing
- ▣ Reduce microbial contamination
- ▣ Increase average cost per pound
- ▣ Easily maintain fresh drop appearance for up to 12 months
- ▣ Consistent cure process
- ▣ Remarkable terpene retention



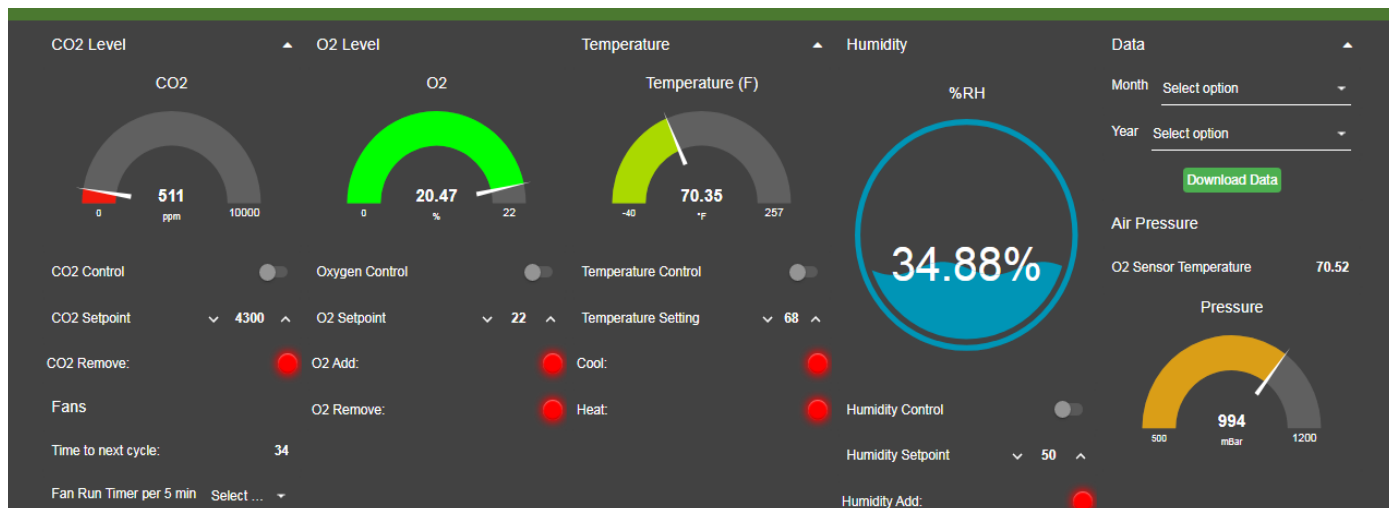
© 2021 G R O W   C O N T R O L L E D ,   L L C .   A L L   R I G H T S   R E S E R V E D .   C O N T A C T   U S   F O R   M O R E   I N F O R M A T I O N .



G R O W   C O N T R O L L E D ,   L L C  
100 APPLEWOOD DRIVE SPARTA MICHIGAN · SODUS NEW YORK · UNION GAP WASHINGTON · PADDOCK WOOD UK  
T 616.256.0420 · F 616.887.1128 · INFO@GROWCONTROLLED.COM · GROWCONTROLLED.COM



# C Ū R P O D   S P A C E   S A V R



CūrPod Cloud Interface

## F E A T U R E S   &   S P E C I F I C A T I O N S

### MEASUREMENT & CONTROL RANGE

Oxygen: 0-25% or 0-2.5% Auto range   Resolution: low range +/- 0.002% O<sub>2</sub>   Electrochemical 4-year long life sensor  
Carbon Dioxide: 0-50000 ppm   Resolution: < 5%   0.002% >5% 0.02%

### CONTROL INPUTS

Control Gases required: Nitrogen with an oxygen content lower than minimum required CA Oxygen.  
Fresh Filtered Air. CO<sub>2</sub> if required. Gas supply inlet pressure 1 to 3 Bar (15 to 50 psi)

Automatic atmosphere control with included operations.

Control Setpoints for Oxygen and CO<sub>2</sub> adjustable to a 0.01% resolution. Gas control differentials 0.05%, CO<sub>2</sub> add differential 0.2%.

Air added for CO<sub>2</sub> control: Air flow adjustable 0.1 to 1 L/min

Nitrogen added when Oxygen is measured high or when CO<sub>2</sub> is high. Adjustable flow 0.2 to 2 L/min. Owner to supply N<sub>2</sub> bottle with regulator.

Additional flow rate adjustable from controller from 100% to 1% of maximum flow over a 5 minute period.

Descant tube for Humidity Control.

### OPERATION OF INTERNAL FANS

ON when control gases being added. With no gas addition, adjustable over range 1 to 5 minutes on every 5 minutes.

### TEMPERATURE MEASUREMENT

Probe with a typical accuracy of 0.1°F available for measuring and recording the CūrPod temperature

### PRESSURE RELIEF

The flow of correction gases into the CūrPod are automatically discharged to atmosphere through a vent.

### DATA COLLECTION

O<sub>2</sub>, CO<sub>2</sub> and temperature recorded to cloud site. CSV downloadable app or desktop web interface.

### LEAKTIGHTNESS

Oxygen at typically 1% in a static CūrPod (no product, no correcting gas) will remain within 1.0% O<sub>2</sub> over a period of 24 hours.

### DIMENSIONS

Standard Size: 18 x RPC crates (Typical Single RPC size: 40 x 60 x 20 cm), Approx. 95 lbs capacity

18 RPCs: 33.75"W x 42"D x 78.75"H (with Casters)

© 2021 GROW CONTROLLED, LLC. ALL RIGHTS RESERVED. CONTACT US FOR MORE INFORMATION.



G R O W   C O N T R O L L E D ,   L L C  
100 APPLEWOOD DRIVE SPARTA MICHIGAN · SODUS NEW YORK · UNION GAP WASHINGTON · PADDOCK WOOD UK  
T 616.256.0420 · F 616.887.1128 · INFO@GROWCONTROLLED.COM · GROWCONTROLLED.COM